

POWERSVAULT

# PVCompact

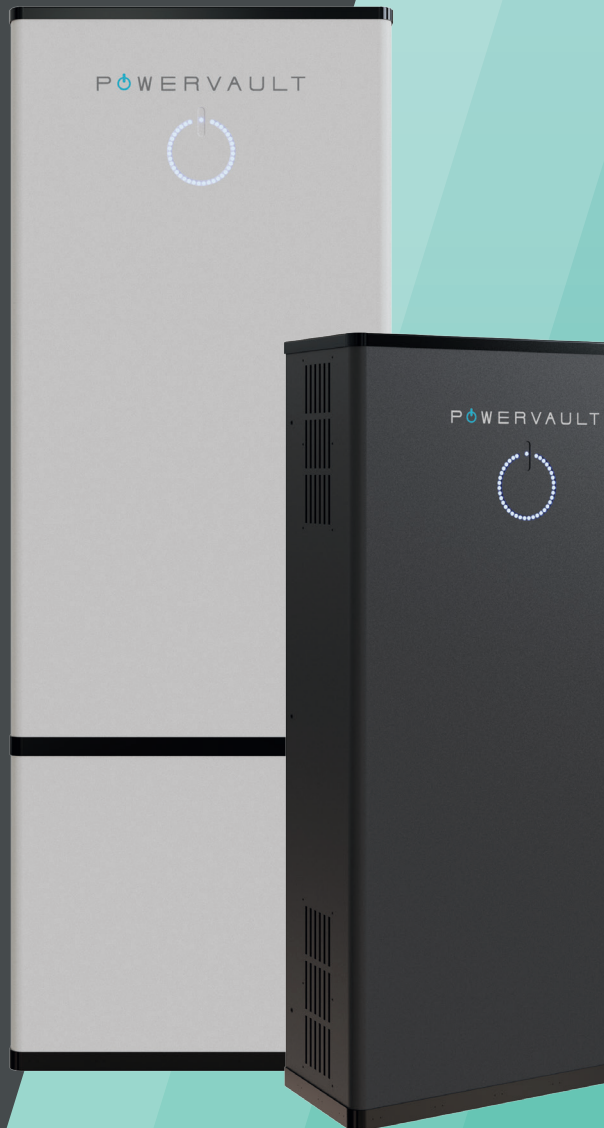
## INTELLIGENT ENERGY STORAGE FOR THE HOME

Simple to use, cost effective and compatible with solar PV and wind turbine systems, PVCompact is designed to help consumers reduce their bills by storing unused renewables and low-cost electricity from the grid.

The PVCompact reduces your carbon footprint and helps you on your journey to net zero.



[www.powervault.co.uk](http://www.powervault.co.uk)



# Saving you money and future proofing your home for net zero

Renewable energy storage is vital to reducing energy bills and achieving net zero for consumers - but storage solutions are often complex to use and expensive.

The innovative PVCompact is different. An essential part of a modern smart home, it's designed to make the transition to a clean energy future easy for everyday consumers. As an AC connected system the PVCompact is compatible with all solar PV and wind turbine inverters and has no impact on valuable FIT generation payments. It boasts fully automated and simple control features from the intuitive online Powervault Portal.

PVCompact stores unused renewable energy generated at home and discharges it when needed. It can also charge from the grid and intelligently store cheap off-peak electricity to use during peak hours.

PVCompact comes with access to the Powervault SmartSTOR software. On a daily basis SmartSTOR automatically optimises your PVCompact based on your tariff, electricity usage and weather forecast to ensure the most efficient use of energy. It seamlessly integrates with most providers' tariffs to make saving on electricity bills and reducing CO2 emissions hassle-free.

PVCompact is - as the name suggests - compact, with a slim, all-in-one design that can be mounted onto a suitable wall. The device is robust, operates quietly and best of all, the device can be tailored to suit the individual user's energy needs. It also means installation is a one-person job, saving costs for both the installer and the customer.

## Discover PVCompact unique features:



- Lower entry-price
- Compact, neat, all-in-one wall-mounted slim design
- 3kWh, 4kWh, 6kWh, 8kWh AC usable capacities
- Emergency power socket option
- LED display with status indicator
- Passive cooling
- Fast, one person installation

## Plus some great features of popular Powervault 3:



- Stores and delivers AC electricity efficiently
- Full access to the intuitive Powervault Portal
- Powervault SmartSTOR energy optimisation
- Modular design
- 100% depth of discharge
- UK-based customer support



## Our product range:



	LARGE	SMALL
GREY	PV01-500A	PV01-540A
WHITE	PV01-510A	PV01-550A
WHITE/ GREY	PV01-520A	-
GREY/ WHITE	PV01-530A	-

# Build your Powervault

PVCOMPACT CAPACITY OPTIONS	3kWh	4kWh	6kWh	8kWh
CHASSIS OPTIONS	3kWh and 4kWh units come in a small chassis as standard; a large can be purchased at the initial point of sale to allow for future capacity upgrades			
FUTURE CAPACITY UPGRADES IF A LARGE CHASSIS IS IN PLACE	3kWh upgradable to 6kWh only	4kWh upgradable to 6kWh or 8kWh	6kWh upgradable to 8kWh only	Not upgradable
COLOUR OPTIONS	White, grey or two tone			
OPTIONAL EXTRAS	EPS sockets: access emergency power from the PVCompact			
INSTALLATION	Indoors and ground-level e.g. utility room, kitchen, garage			

## User portal

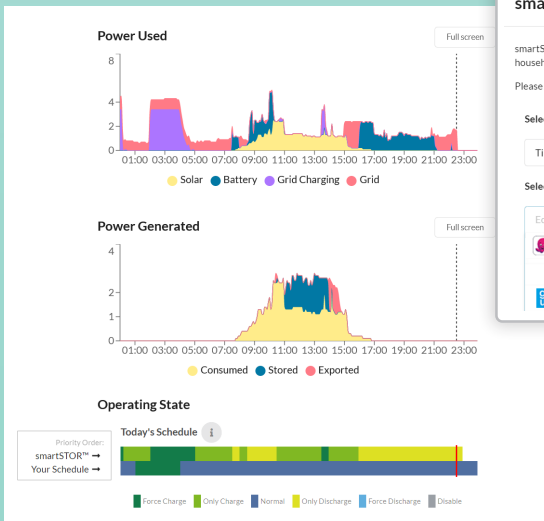
The Powervault Portal provides users with a platform from which to monitor their present and historical energy consumption and renewable energy generation, it also shows the performance of their Powervault system, incorporating a live view, daily totals and charts that show each 24 hour period. Customers can use scheduling features in the Portal to take advantage of Time of Use (ToU) tariffs. The Powervault Portal also allows users to optimise their PVCompact with SmartSTOR, Powervault's proprietary artificial intelligence energy optimisation system.

## Portal features and benefits:



- Live power view
- Daily consumption and generation charts to help you understand your energy usage
- Simple scheduling to work with Time of Use tariffs
- SmartSTOR energy optimisation

These features save customers money and time.



**smartSTOR™**

smartSTOR™ automatically sets the best schedule for your Powervault household's energy usage, including projected solar generation.

Please complete the form below to enable smartSTOR™ on your Pow

**Select Tariff Type:**

Time of Use tariff

**Select Import Tariff:**

Electricity - Time of Use Tariff Trial (Jan 2021)

Octopus Energy - Agile Octopus (Feb 2021) - East

P W E R V A U L T - Generic - Economy 7

GEUK - TIDE (Jan 2021) - Eastern England

Powervault Ltd. Unit 9,  
Garrick Industrial Estate,  
Irving Way, London NW9 6AQ  
t +44 (0) 203 653 1111  
e hello@powervault.co.uk  
powervault.co.uk

**E&QE, subject to terms and conditions and technical specifications**